

Ch - Nervous System

Q1 Fill in the blanks:

- 1) largest part of the brain is _____
- 2) Sense organ of taste is _____
- 3) Sense organ that helps us to feel is _____
- 4) _____ is the other name of nerve cell.
- 5) _____ is the transparent covering of eye.

Q2 Correct Incorrect statement:

- 1) Sensory nerves carry messages from brain to different parts of body.
- 2) Auditory nerves carry messages from nose to brain

Q3 Give Reasons:

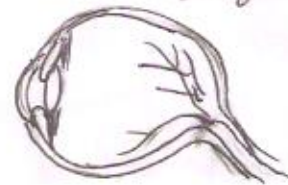
- 1) Cerebrum is called the centre of Intelligence
- 2) Tongue is the sense organ of taste.

Q4 Picture based:

- A) 1) Identify the action shown
2) Explain it
3) Draw a diagram to show how messages are sent and received in it.



- B) 1) Identify the picture
2) label all its parts
3) write the functions of any 4 labelled parts.



Q5 Draw diagram and explain the parts of the brain.

Q6 Discuss the different types of nerves.

Q7 Explain the sense organs:

- 1) Skin
- 2) Nose